

ABSTRACT

This project addressed inefficiencies in a mid-sized clothing retail store where fragmented communication and unstructured onboarding led to delays, errors, and high employee turnover. The objective was to design a conceptual framework for standardized communication and structured onboarding to enhance operational consistency, clarify role expectations, and strengthen workforce integration. The DMAIC methodology was applied to analyze existing practices, identify root causes, and develop improvements. Tools included SIPOC diagrams, process maps, check sheets, fishbone diagrams, and benchmarking. Findings revealed systemic managerial choices and lack of standard protocols as primary drivers of inefficiency. The Improve Phase produced a framework featuring a task-channel communication matrix, milestone-based onboarding flow, and Lean alignment. The Control Phase defined KPIs, monitoring strategies, and review cycles for sustainability. While the framework was not implemented, results demonstrated measurable pathways to improve reliability, reduce errors, and lower turnover risk if adopted.

INTRODUCTION

Retail performance depends on clear communication and structured workforce development. In a mid-sized clothing store, information flow between management, warehouse, and staff was informal, and onboarding lacked defined milestones. These weaknesses caused delays, misinterpretations, and high early turnover. The project aimed to design a conceptual framework for standardized communication and onboarding, using the DMAIC methodology to identify inefficiencies, analyze root causes, and propose structured, Lean-aligned improvements.

PROBLEM STATEMENT

Current practices rely on informal communication and onboarding without defined learning paths or expectations. This causes frequent errors, low accountability, and attrition. Addressing these gaps is essential for improving stability and efficiency.

PROJECT OBJECTIVE

Design a conceptual framework for standardized communication and structured onboarding to improve operational consistency, clarify role expectations, and strengthen workforce integration.

DEFINE PHASE

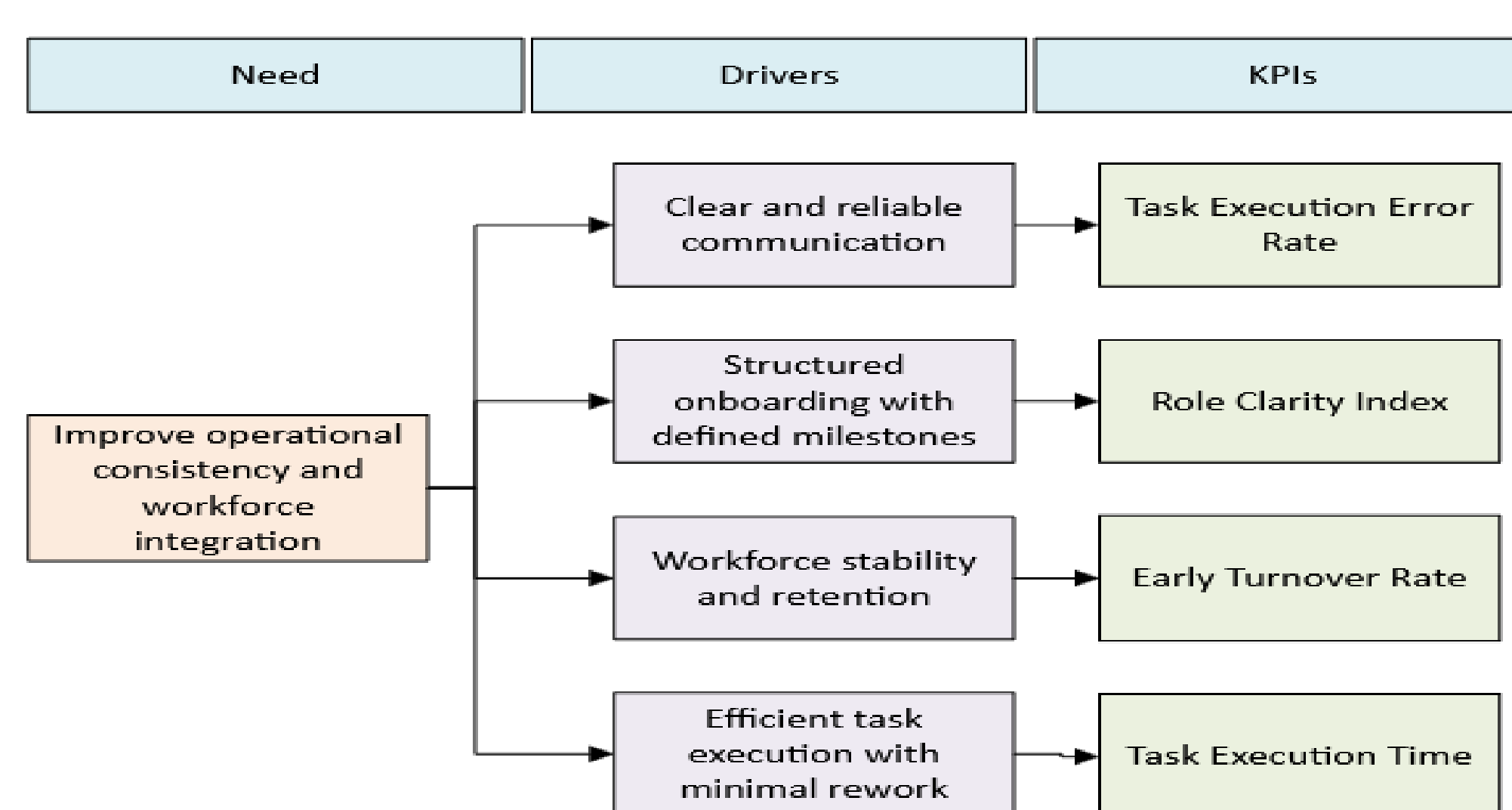
The Define Phase established the business case, project scope, and CTQ (Critical to Quality) drivers. Fragmented communication and ad-hoc onboarding were identified as the primary issues limiting performance and retention. Stakeholder mapping showed that management and staff relationships directly influenced consistency.

SIPOC Table

| Suppliers | Inputs | Process | Outputs | Customers |
|-----------------------|---|--|---|--------------------------|
| Upper Management | Company directives, policies (delayed or incomplete) | Communication Flow: Messages sent to store via informal channels | Inconsistent, delayed, or incorrect information reaching store level. | Store Management |
| Warehouse Staff | Inventory updates, stock movements missed or incomplete | Store management relays updates verbally or through ad-hoc channels. | Task instructions with errors, delays, or ambiguity. | Work Staff |
| Store Management | Scheduling, staffing plans, role assignment | Onboarding Flow: New hires assigned to "learn as you go" approach. | Employees without structured learning path or milestones. | New Employees |
| Experienced Employees | Tacit knowledge, informal training. | Peer-to-peer explanations during live operations. | Knowledge transfer is inconsistent and incomplete. | New Employees, Customers |
| Training Resources | Best practices, manuals (missing) | No structured reference material | Lack of onboarding manual or | Organization |

The lack of standardized procedures results in message distortion and inconsistent task execution.

CTQ Tree

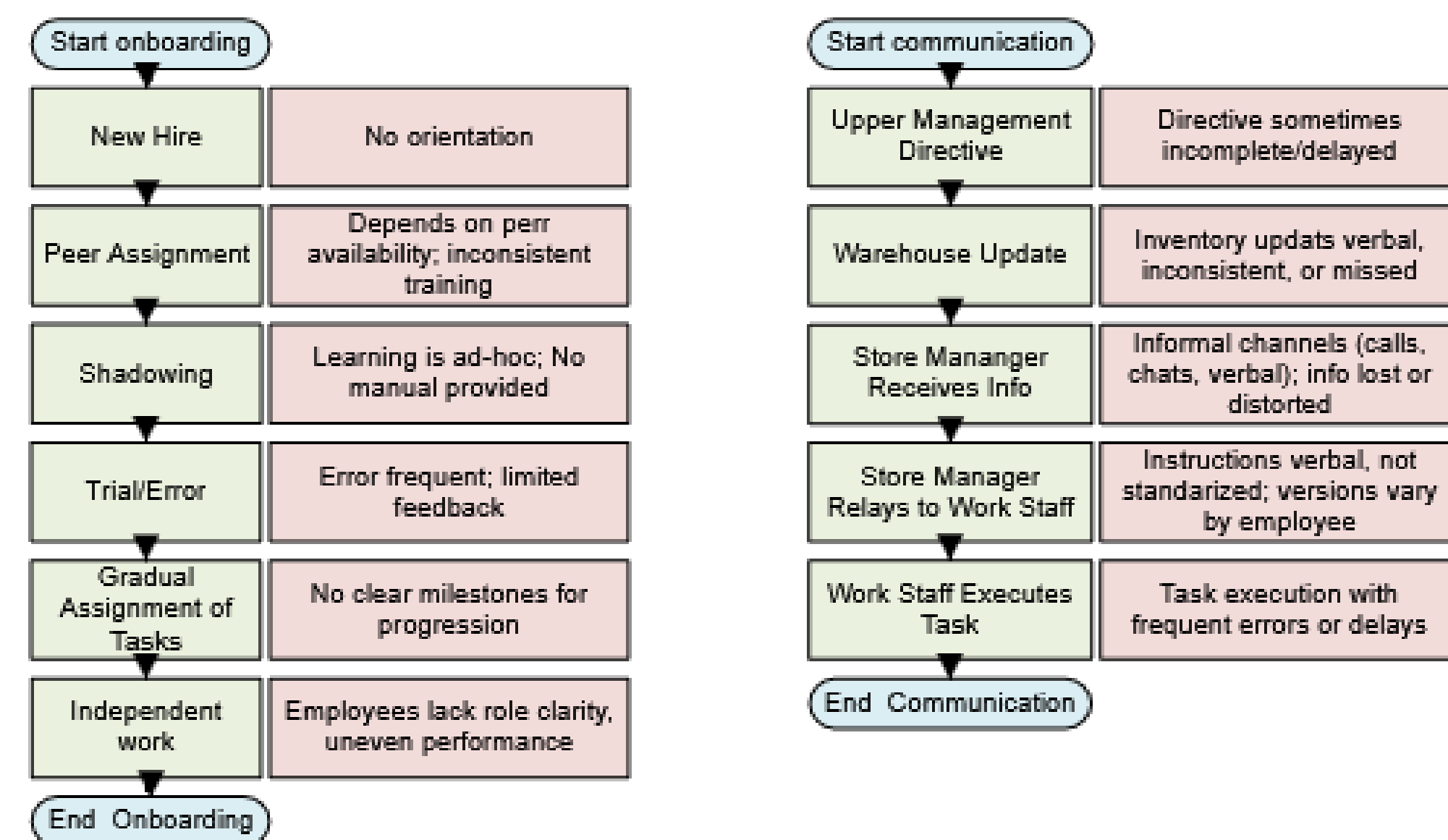


Maps customer and operational needs to measurable quality drivers such as communication clarity, task accuracy, and employee integration. These CTQs formed the foundation for the project's KPIs.

MEASURE PHASE

Process maps documented current practices. Communication relied on verbal exchanges and personal chats, producing delays and misinterpretations. Onboarding lacked manuals, milestones, and structured oversight, leading to uneven learning.

Process Maps: Onboarding and Communication

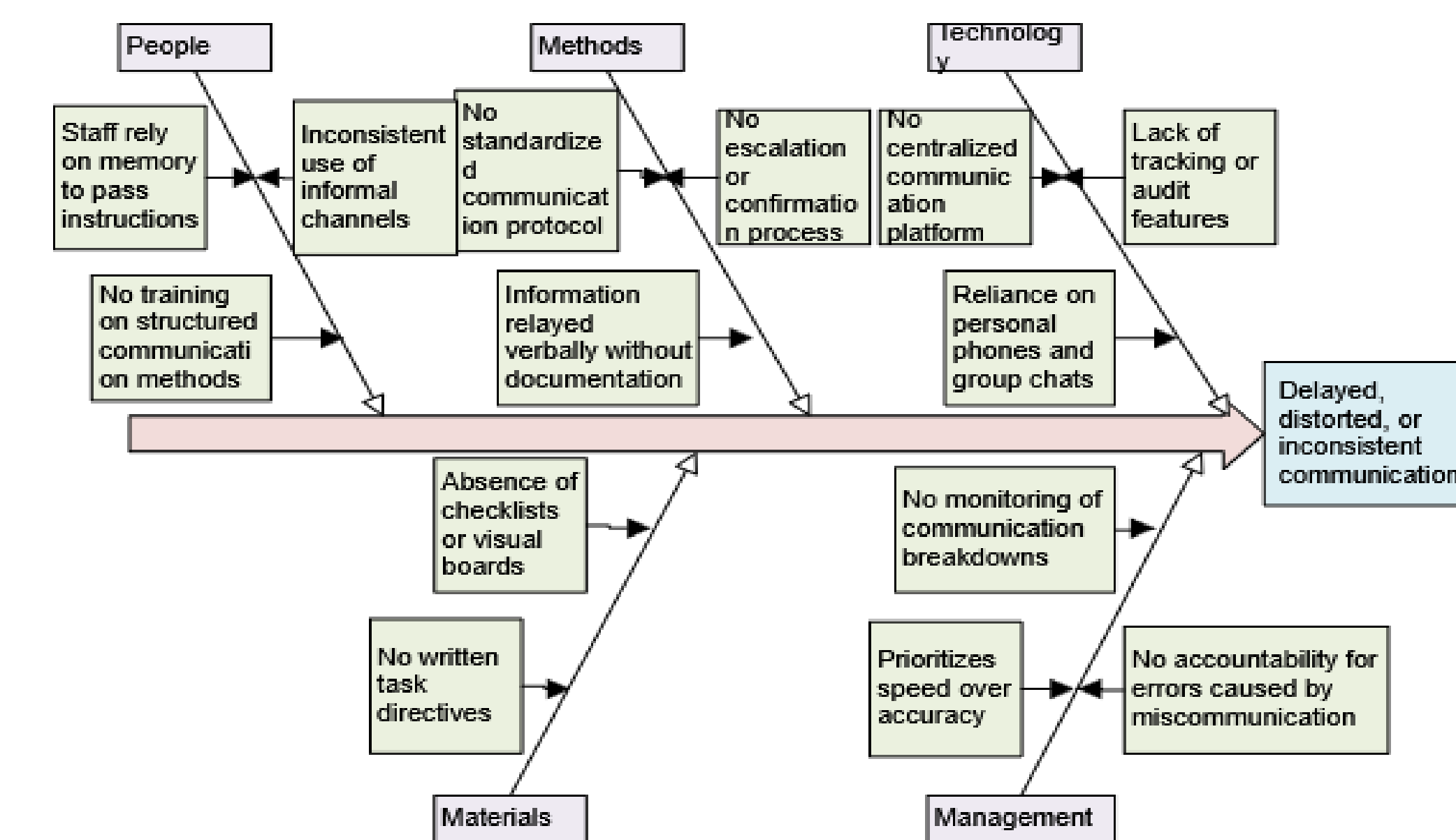


Shows the "learn as you go" onboarding method lacking manuals, milestones, and supervisory checkpoints. Shows unstructured communication flow where verbal and chat-based exchanges cause delays and errors.

ANALYZE PHASE

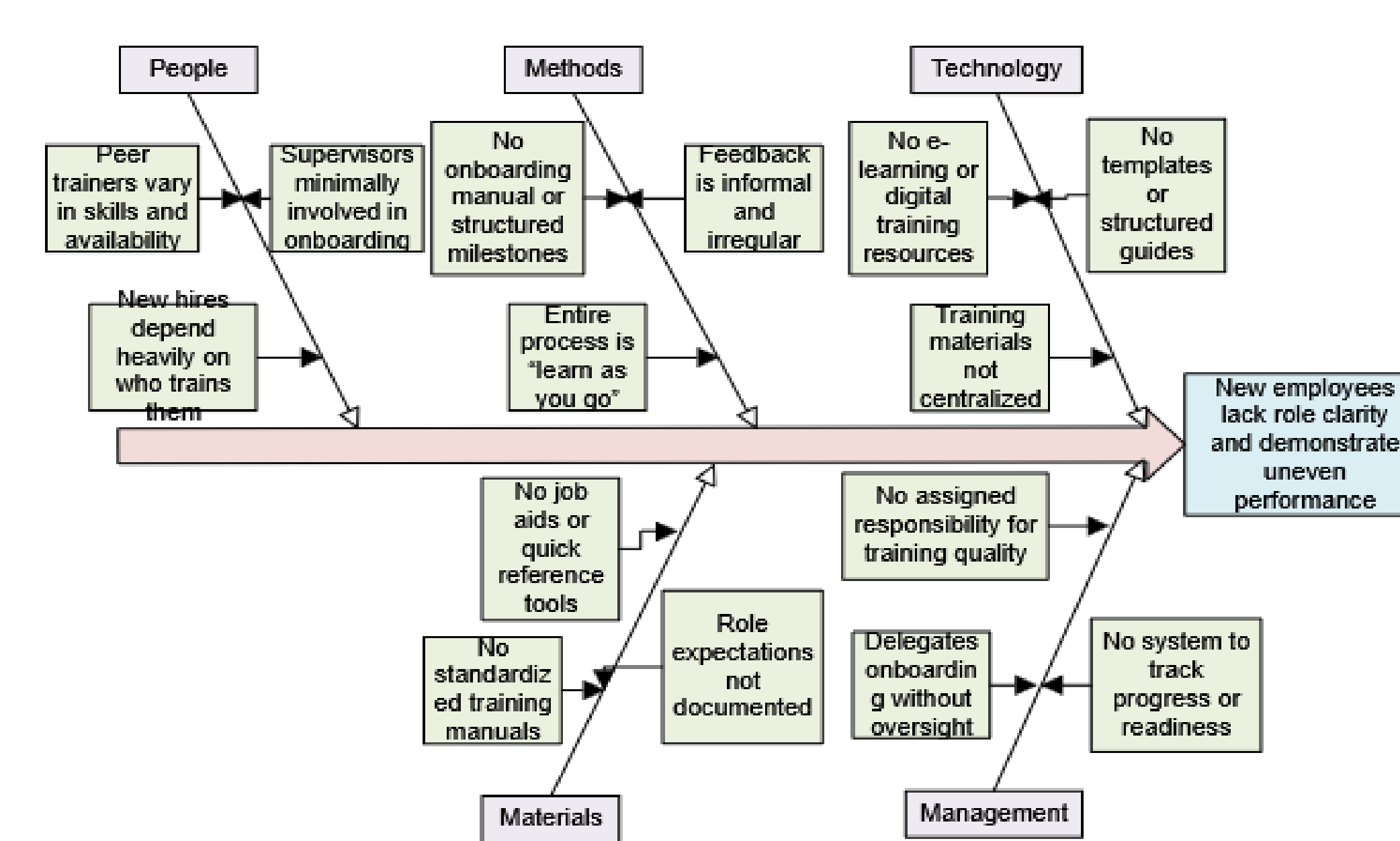
Fishbone and 5 Whys analyses identified root causes. Benchmarking validated these findings. A prioritization matrix ranked these as high-impact areas, guiding the conceptual redesign in the Improve phase.

Fishbone communication



Identifies systemic causes behind communication failures; inadequate protocols, inconsistent methods, and overreliance on personal devices. Indicates that root causes are managerial, not behavioral.

Fishbone Onboarding



Identifies that onboarding inconsistency comes from missing manuals, unclear milestones, and lack of managerial monitoring, not employee capability. Points toward need for a formalized structure.

Benchmarking

| Area | Current Practice | Best Practice |
|----------------------|--|---|
| Communication | Informal channels used inconsistently. | Match channel to task type for clarity and speed. |
| Information Flow | No system for recording or tracking updates. | Use visual management and documented workflows to improve reliability. |
| Task Instructions | Relayed verbally, varying by manager or situation. | Standard work instructions and checklists ensure uniform results. |
| Onboarding Process | "Learn-as-you-go" leads to uneven skills and turnover. | Structured onboarding with milestones and feedback accelerates integration. |
| Training Transfer | Dependent on peer availability; lacks supervision. | Supervisor support and scheduled feedback ensure competence. |
| Employee Integration | No milestones; unclear expectations. | Role clarity and structured socialization reduce attrition. |

This summary compares current gaps with best practices identified through Lean, communication, and onboarding literature to guide the conceptual framework design.

Prioritization Matrix

Evaluates each root cause by impact and feasibility. The highest-priority problems are lack of standardized communication, missing onboarding structure, and poor oversight.

| Root Cause | Impact on Performance | Effort to Address | Priority |
|---|---|--|----------|
| Lack of standardized communication protocol | High — causes delays, misinterpretation, and rework. | Medium — requires process design and management enforcement. | High |
| Reliance on personal phones/group chats | Medium — contributes to inconsistency but less critical than protocol | High — requires investment in digital infrastructure (outside project scope) | Low |
| No onboarding manual or structured milestones | High — leads to confusion, errors, and turnover. | Medium — needs documentation and milestone design. | High |
| Delegation of onboarding without oversight | High — weakens accountability and training consistency. | Medium — requires managerial engagement. | High |
| Variability in peer trainers | Medium — uneven performance due to informal methods. | Low — resolved indirectly if structured framework is applied | Low |

IMPROVE PHASE

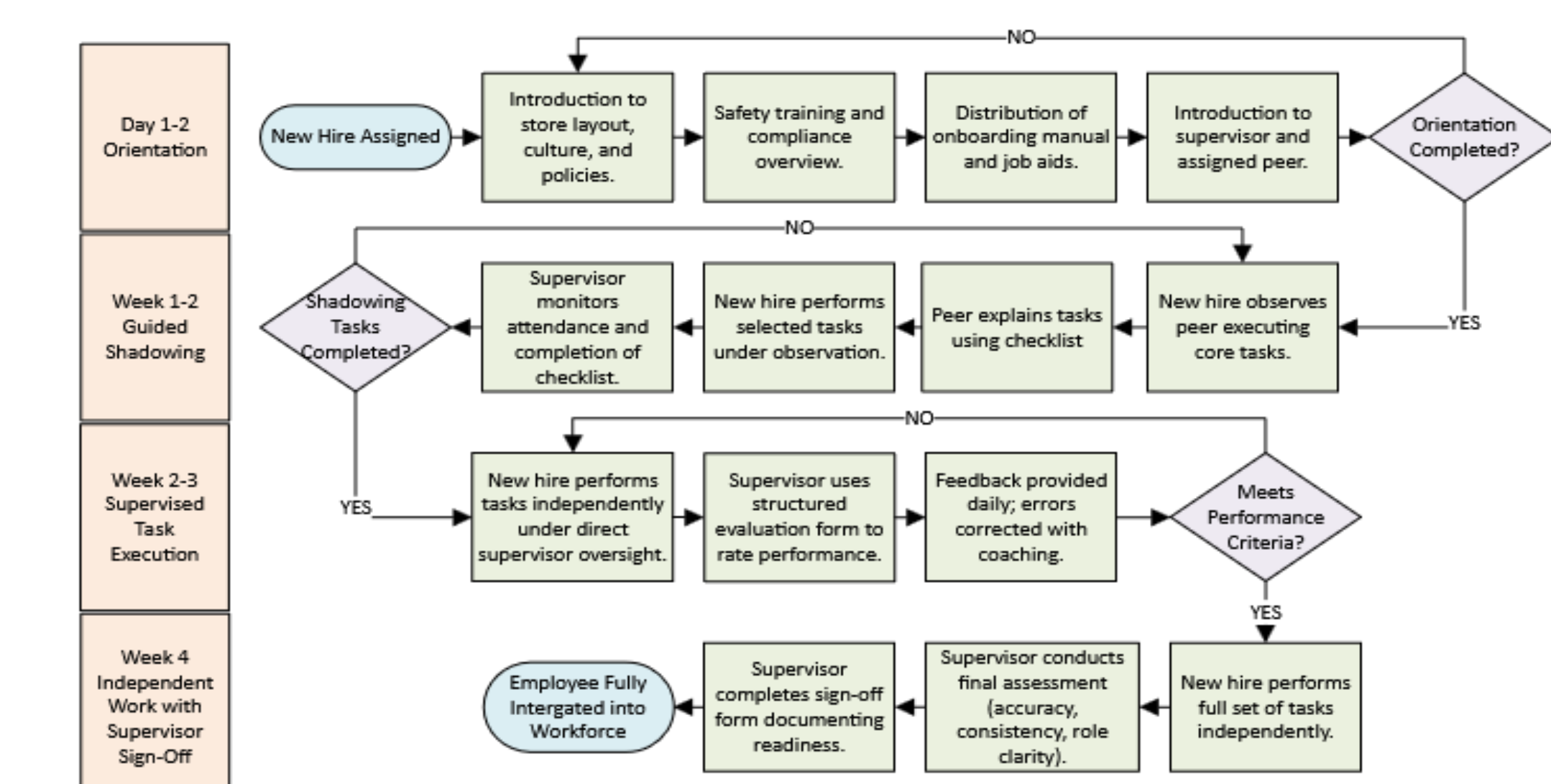
The framework proposed standardized communication protocols via a Task-Channel Matrix aligning message type, channel, and confirmation. A milestone-based onboarding flow introduced orientation, guided shadowing, supervised execution, and sign-off. Lean principles were embedded to increase consistency and accountability.

Task-Channel Matrix

| Task Type | Channel | Synchronicity | Sender | Receiver | Confirmation Required? |
|------------------------------------|--|---------------|-----------------------------------|-----------------------------|-----------------------------|
| Urgent directives | In-person briefing or secure instant message | High | Upper Management Store Manager | Store Manager Work Staff | Log or verbal confirmation |
| Complex or Equivocal tasks | Structured meeting with written follow-up | High | Upper Management or Store Manager | Work Staff | Signed receipt or checklist |
| Routine updates | Digital board or shared document | Low | Warehouse Staff or Store Manager | Work Staff | Task receipt confirmation |
| Standard task instructions | Written directive or visual board | Low | Store Manager | Work Staff | Checklist completion |
| Escalation of unclear instructions | Formal escalation protocol | High | Any staff member | Supervisor or Store Manager | Log escalation |

Matrix ensures each task type uses an appropriate communication channel and synchronicity level. Confirmation methods establish accountability and prevent message distortion.

Onboarding Flowchart



Outlines the recommended onboarding sequence, orientation, shadowing, supervised execution, and final sign-off. The milestone-based design ensures consistent knowledge transfer.

Lean Alignment Summary

| Lean Principle | Application in Redesigned Framework | Expected Benefit |
|------------------------|--|--|
| Standard Work | Task-Channel Matrix for communication; Onboarding manuals and milestones | Reduced variability; consistent task execution |
| Visual Management | Checklists, communication logs, milestone trackers, sign-off forms | Transparency; immediate detection of errors/deviations |
| Continuous Improvement | Escalation pathways, supervisor checkpoints, structured feedback | Ongoing refinement and adaptability |

Demonstrates how Lean principles support the proposed framework. Standard work ensures uniformity, visual management enhances transparency, and continuous improvement drives adaptability.

CONTROL PHASE

A conceptual control plan was proposed to sustain improvements through monitoring, review cycles, and feedback. Four KPIs were defined: Role Clarity, Task Error Rate, Turnover, and Execution Time.

KPI Summary

| KPI | Measurement Method | Frequency | Responsible Owner | Why Selected |
|---------------------------|--------------------------------|------------------|-----------------------------------|--|
| Role Clarity Index | Post-onboarding survey (1-5) | After each cycle | Supervisor to Store Manager | Measures onboarding clarity; reduces confusion & attrition |
| Task Execution Error Rate | Error log tied to instructions | Weekly | Store Manager | Evaluates if protocols reduce rework & miscommunication. |
| Turnover Rate | % leaving within first 90 days | Quarterly | Store Manager to Upper Management | Tracks workforce integration & retention success.. |
| Task Execution Time | Time study of selected tasks | Monthly | Supervisor to Store Manager | Lean principle: Assesses efficiency & waste reduction |

Lists conceptual indicators designed to measure framework success. Focuses on role clarity, task accuracy, workforce stability, and operational efficiency.

Sustainability Plan

| Mechanism | Description | Intended Outcome |
|---------------------------|--|---|
| Feedback Loops | Regular staff surveys and feedback sessions. | Keep processes relevant, identify issues quickly |
| Standard Work Updates | Periodic revisions to manuals, checklists, and communication protocols | Ensure framework stays current and adaptable |
| Managerial Responsibility | Integrate onboarding and communication oversight into reviews. | Strengthen accountability and prevent neglect. |
| Continuous Improvement | Use escalation paths, checkpoints, and structured feedback | Promote adaptability and long-term effectiveness. |

Describes mechanisms for maintaining the framework over time, including periodic updates, feedback loops, and managerial accountability to ensure long-term resilience.

EXPECTED BENEFITS AND CONCLUSION

The project confirmed that fragmented communication and informal onboarding were key barriers to consistent retail performance. Using the DMAIC methodology, a conceptual framework was developed to standardize communication and structure onboarding processes. The framework emphasized operational clarity, defined learning milestones, and managerial accountability through tools such as confirmation logs and checklists. If implemented, these practices could enhance reliability, reduce task delays and rework, and improve workforce integration. Evidence from Lean and onboarding literature suggested additional benefits, including lower turnover and stronger role clarity. Although not executed, the framework provided academic and practical value by integrating Lean principles, Media Synchronicity Theory, and structured onboarding research, offering a scalable model to strengthen communication and workforce stability in retail operations.

REFERENCES

- W. Urban, & J. Ostaszewska, Application of Lean management in retail: A research agenda, Management Papers, 2025.
- J. M. Machuca De Pina, R. S. Egoavil Bazán, & N. S. Rodriguez Ortiz, Lean management practices applied in retail sector businesses: A systematic review of literature, Proc. IEOM Conf., 2023.
- J. B. Windeler, & A. W. Harrison, Rethinking media synchronicity theory: Examining the cooperative assumption, Proc. HICSS, 2018.
- M. Nowak, H. Pfaff, & U. Karbach, Does value stream mapping affect the structure, process, and outcome quality in care facilities?, BMC Health Serv. Res., vol. 17, 2017.
- O. Torro, H. Pirkkalainen, & H. Li, Media synchronicity in organizational social exchange, Inf. Technol. & People, vol. 35, no. 8, pp. 162-181, 2022.
- R. L. R. Gomes, & S. Daniele, The relevance of structured onboarding in the assimilation of organizational culture, World J. Adv. Res. & Rev., vol. 18, no. 1, pp. 197-204, 2023.